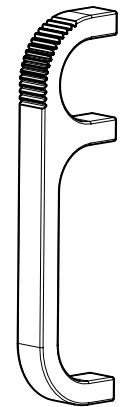
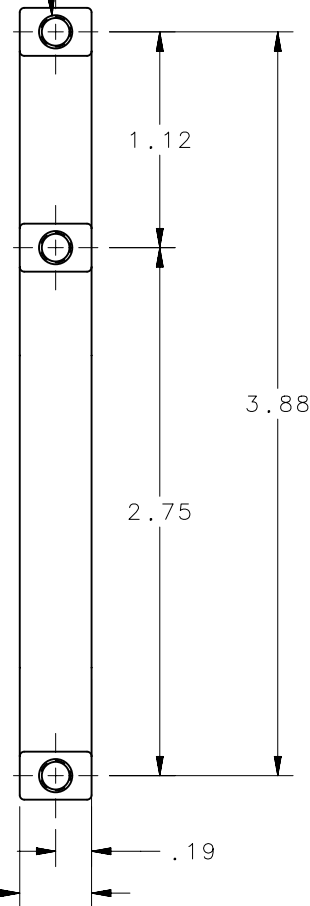
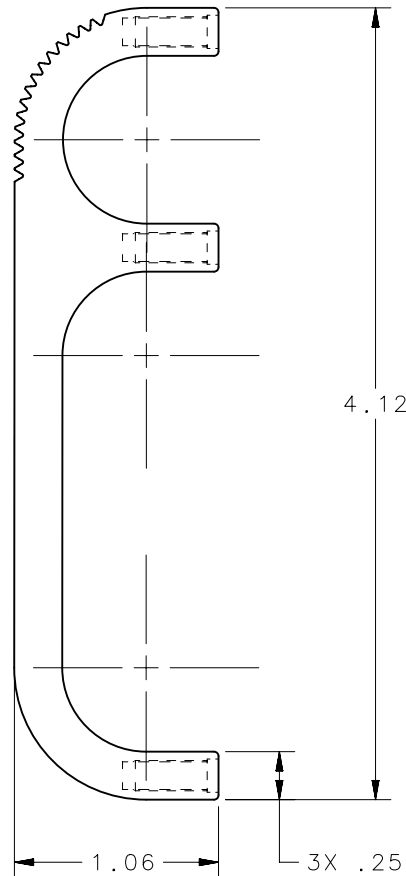


3X M4 X 0.7 THREAD X 9.5 DEEP
 Ø .196 MOUNTING HOLES IN PANEL.
 CENTRE SCREW MAY BE OMITTED.

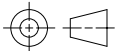


SCALE 1:2

| REVISION HISTORY | | | |
|------------------|-----------|---------|-----------------|
| REV | DATE | BY | DESCRIPTION |
| H | 18AUG2016 | RNG/YGC | PRN: P2016-1911 |

NOTES:

- COSMETIC SPECIFICATION:
ALL SURFACES UNLESS OTHERWISE NOTED ARE TO CONFORM TO A CLASS "B" DESIGNATION AS DESCRIBED IN SOUTHCO COSMETIC SPECIFICATION: S-121-03 FOR POWDER COATING S-121-06 FOR ANODIZED FINISH
- RoHS COMPLIANT.

| | | | | | |
|--|---|---|----------------------|------------------------|-----------------|
| B4-50-403-75 | PULL | 6063 ALUMINUM | SILVER POWDER COATED | | |
| B4-50-403-15 | PULL | 6063 ALUMINUM | BLACK ANODIZE | | |
| B4-50-403-13 | PULL | 6063 ALUMINUM | NATURAL | | |
| B4-50-403-12 | PULL | 6063 ALUMINUM | BLACK POWDER COATED | | |
| B4-50-403-11 | PULL | 6063 ALUMINUM | CLEAR ANODIZED | | |
| SOUTHCO PART NUMBER | TYPE OF COMPONENT | MATERIAL | FINISH | | |
| | THIRD ANGLE PROJECTION | <div></div> <div>southco® CONNECT • CREATE • INNOVATE</div> | | | |
| | INCHES [MM] | | | | |
| | TOLERANCES UNLESS OTHERWISE NOTED | DESCRIPTION B4 PULL, 400 SERIES METRIC THREAD | | | |
| SURFACE AREA | ALL DIMENSIONS WITHOUT TOLERANCES ARE FOR REFERENCE ONLY. | | | | |
| VOLUME | | SIZE A | SYSTEM NX | DWG NO. J-B4-50-403 | |
| PROPRIETARY ITEM | PER ASME Y14.5M-1994 | DRAWN BY VBS | DATE 13APR1984 | SCALE 1:1 | SHEET 1 OF 1 |
| EXCEPT FOR USES EXPRESSLY GRANTED IN WRITING, INFORMATION DISCLOSED HEREON IS CONFIDENTIAL AND ALL RIGHTS, PATENT AND OTHERWISE, ARE RESERVED BY SOUTHCO, INC. | | | | | |